



**Camino Medical Group
Target Costing Panel
Discussion**

Presentation to
**7th Annual Lean
Construction Congress**
September 22, 2005

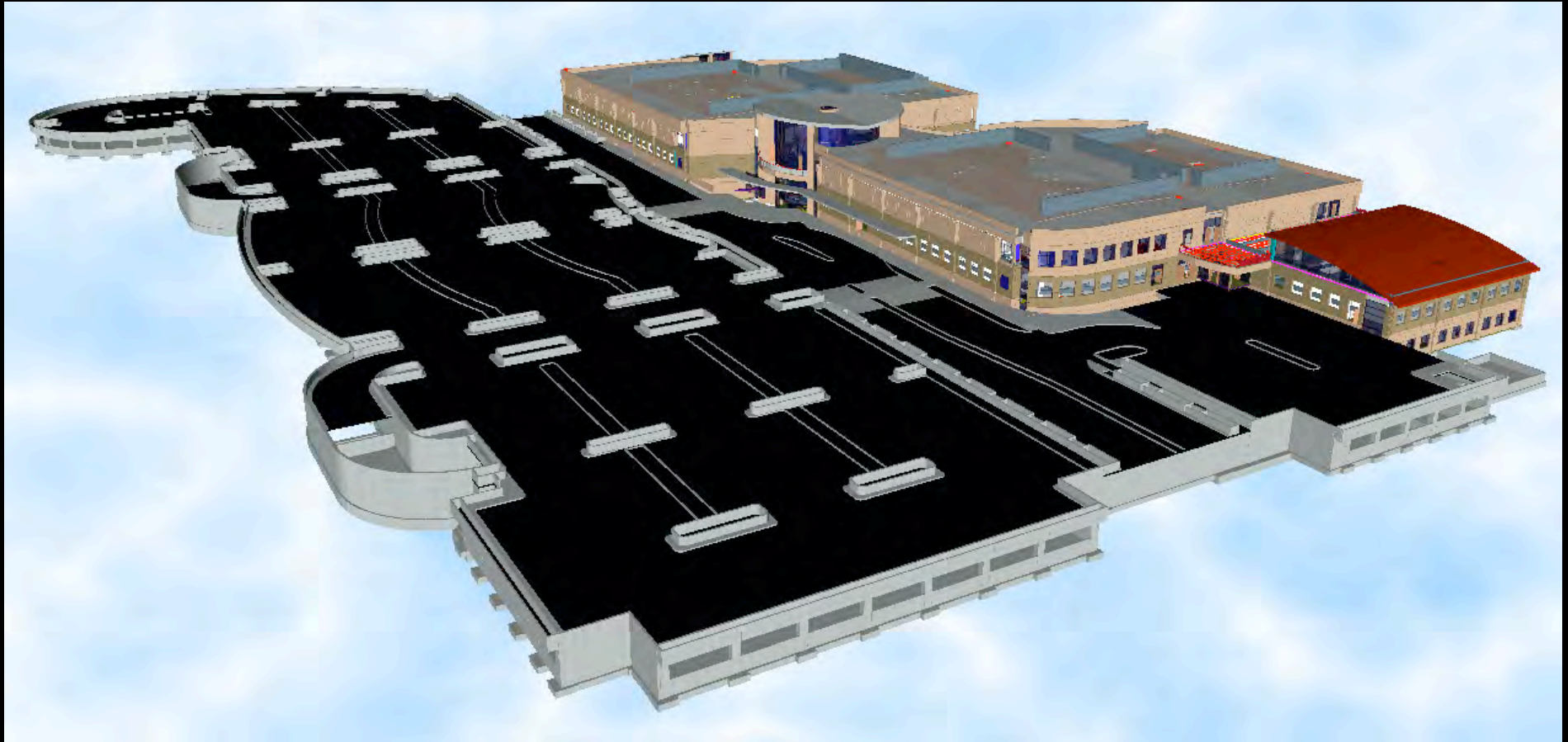


Camino Medical Group Project Target Costing Panel Discussion

The Camino Medical Center

- For the Camino Medical Group (CMG)
- In Mountain View, California
- Site & Infrastructure development (420,790sf)
- Parking structure (1,110 stalls, 420,000sf)
- Medical Office Building (110 Providers, 250,000sf)
- Urgent Care Center (6,000sf)
- Outpatient Surgery Center (5 Suites, 20,000sf)
- Pharmacy (6,000sf)
- Laboratory and Diagnostics Radiology Center (30,000sf)
- \$100 million in construction costs

Parking Structure & Medical Office Building



Building a Team to Make the Process Work

- *Dr. Slavin*
Camino Medical Group
- *Curtis, Henry, David, Gary, Mark, Kevin, Corey*
Hawley, Peterson & Snyder
- *Bryan, Steve*
Capital Engineering Consultants
- *Kristina*
The Engineering Enterprise
- *Bruce*
Sandis Humber Jones
- *Blake, Rich*
KPFF – SF
- *Heather, Ken*
Watry
- *Dave C, Dave P, Will, John, Amaya*
Sutter Health
- *Scott, Mark, John, Jerry and Ceasar*
Southland
- *Jeremy, Tim, Norbert*
Cupertino Electric
- *Clint, Ray, David*
JW McClenahan
- *Harry, David*
Northstar Fire Protection
- *Eric, George, Bill, Ian, Tracy, Scott, Ralph, Dan, Eddie, Atul, Dean*
DPR



**Camino Medical Group
Target Costing Panel
Discussion**

Presentation to
**7th Annual Lean
Construction Congress**
September 22, 2005



Questions & Answers